

ORIGINAL ARTICLE

Exclusive enteral nutrition continues to be first line therapy for pediatric Crohn's disease in the era of biologics[☆]



V.M. Navas-López^{a,b,*}, J. Blasco-Alonso^{a,b}, S. Lacasa Maseri^a,
F. Girón Fernández-Crehuet^a, M.J. Serrano Nieto^a,
M.I. Vicioso Recio^c, C. Sierra Salinas^{a,b}

^a Pediatric Gastroenterology and Nutrition Unit, Hospital Materno Infantil, Málaga, Spain

^b Biomedical Institute of Malaga (IBIMA), Málaga, Spain

^c Clinical Laboratory, Carlos Haya University Hospital, Málaga, Spain

Received 26 November 2013; accepted 18 February 2014

Available online 20 February 2015

KEYWORDS

Inflammatory bowel disease;
Crohn's disease;
Exclusive enteral nutrition;
Calprotectin

Abstract

Background: Exclusive enteral nutrition (EEN) has been shown to be more effective than corticosteroids in achieving mucosal healing without having their side effects.

Objectives: To determine the efficacy of EEN in terms of inducing clinical remission in newly diagnosed CD children and to study the efficacy of this therapeutic approach in improving the degree of intestinal mucosa inflammation.

Materials and methods: The medical records of patients with newly diagnosed Crohn's disease treated with EEN were reviewed retrospectively. The degree of mucosal inflammation was assessed by fecal calprotectin (FC). Remission was defined as a PCDAI < 10.

Results: Forty patients (24 males) were included, the age at diagnosis was 11.6 ± 3.6 years. Of the 34 patients who completed the EEN period, 32 (94% per-protocol analysis) achieved clinical remission. This percentage fell to 80% in the intention-to-treat analysis. The compliance rate was 95%. Duration of EEN was 6.42 weeks (IQR 6.0–8.14). FC was significantly higher in patients with moderate and severe disease. Median baseline FC levels ($680 \mu\text{g/g}$) decreased significantly to $218 \mu\text{g/g}$ ($p < 0.0001$) after EEN. We found a statistically significant correlation between FC and PCDAI ($\rho = 0.727$; $p < 0.0001$). Early use of thiopurines (<8 weeks) vs. subsequent use was not associated with better outcome during the follow-up.

[☆] Please cite this article as: Navas-López VM, Blasco-Alonso J, Lacasa Maseri S, Girón Fernández-Crehuet F, Serrano Nieto MJ, Vicioso Recio MI, et al. La nutrición enteral exclusiva continúa siendo el tratamiento de primera línea en la enfermedad de Crohn pediátrica en la era de los biológicos. An Pediatr (Barc). 2015;83:47–54.

* Corresponding author.

E-mail address: victor.navas@gmail.com (V.M. Navas-López).

PALABRAS CLAVE

Enfermedad inflamatoria intestinal;
Enfermedad de Crohn;
Nutrición enteral exclusiva;
Calprotectina

Conclusions: EEN administered for 6–8 weeks is effective for inducing clinical remission and decreasing the degree of mucosal inflammation. We did not find differences in terms of maintenance of remission in patients treated early with thiopurines.

© 2013 Asociación Española de Pediatría. Published by Elsevier España, S.L.U. All rights reserved.

La nutrición enteral exclusiva continua siendo el tratamiento de primera línea en la enfermedad de Crohn pediátrica en la era de los biológicos

Resumen

Introducción: La nutrición enteral exclusiva (NEE) ha demostrado ser más efectiva que los esteroides para alcanzar la curación mucosa sin sus efectos secundarios.

Objetivos: Determinar la eficacia de la NEE para inducir la remisión clínica y mejorar el grado de inflamación mucosa en pacientes con EC durante su primer brote.

Material y métodos: Revisión de las historias clínicas de pacientes con EC tratados con NEE durante su primer brote. El grado de inflamación mucosa se estimó mediante la calprotectina fecal (CF). Se definió remisión como PCDAI < 10.

Resultados: Se incluyeron 40 pacientes (24 varones) con una edad al diagnóstico de $11,6 \pm 3,6$ años. La duración de la NEE fue de 6,42 semanas (RIQ 6,0–8,14). De los 34 pacientes que completaron el período de NEE, 32 (94% en el análisis por protocolo) alcanzaron la remisión clínica. Este porcentaje descendió al 80% en el análisis por intención de tratar. La tasa de cumplimiento fue del 95%. Los valores de CF fueron significativamente más altos en pacientes con brotes moderados y graves. La CF basal fue de $680 \mu\text{g/g}$ y descendió de forma significativa a $218 \mu\text{g/g}$ al final del período de NEE ($p < 0,0001$). Hubo correlación estadísticamente significativa entre CF y PCDAI ($\rho = 0,727$; $p < 0,0001$). La introducción precoz del tratamiento con tiopurinas (antes de las 8 semanas) no se asoció a una mejor evolución durante el seguimiento.

Conclusiones: La NEE administrada durante 6–8 semanas es efectiva para inducir la remisión clínica y mejorar el grado de inflamación mucosa. No encontramos diferencias en términos de mantenimiento de la remisión en pacientes tratados precozmente con tiopurinas.

© 2013 Asociación Española de Pediatría. Publicado por Elsevier España, S.L.U. Todos los derechos reservados.

Introduction

Crohn's disease (CD) is an idiopathic chronic inflammatory disorder. The natural course of Crohn's disease is characterized by flare-ups alterned with periods of remission. Controlling intestinal inflammation is crucial for preventing progressive intestinal damage and the appearance of complications.¹

The incidence of CD in children and adolescents is approximately 3 cases/100,000 inhabitants (range 1–8/100,000 inhab.) and this has increased in Spain and Europe during the last decade.² Up to 20% of CD patients are diagnosed before the age of 18 years. There are differences in the form of onset, natural course, and treatment regimens between adults and children. Another key difference is delayed growth, up to 46% of children and adolescents diagnosed with CD had a decrease in their growth rate before the onset of any other symptoms, and only 12% had a normal growth rate at the time of diagnosis.³ This is not only found at diagnosis, it has a variable prevalence during follow-up.⁴ It is also important to remember that a chronic disease appearing during childhood is associated

with considerable psychological morbidity that may influence personal relationships, psychosexual development, scholastic achievements and adherence to treatment.

There are a wide range of therapeutic objectives that need to be achieved in active disease; these include control of inflammation, mucosal healing, modifying disease progression, preventing the adverse effects of treatment and guaranteeing suitable growth and development.^{5,6} Exclusive enteral nutrition (EEN) has been shown to be more effective than corticosteroids, without their side effects, in achieving mucosal and transmural remission, a situation that determines better prognosis in the following years, lower hospitalization rate and less use of biological drugs.^{7–11}

Calprotectin is a calcium-binding protein with antimicrobial properties. Calprotectin is released from the cytoplasm of activated neutrophils, and the fecal levels increase in bowel inflammation.¹² Fecal calprotectin (FC) values have been correlated with endoscopic scores in adults and children with IBD. It is a non-invasive biomarker with high sensitivity and specificity that enables monitoring of inflammatory activity and prediction of clinical relapse.^{12–17}

Objectives

The aims of this study were to determine the efficacy of EEN in terms of inducing clinical remission in newly diagnosed CD children and to study the efficacy of this therapeutic approach in improving the degree of intestinal mucosa inflammation using FC as a non-invasive inflammatory biomarker and to assess the effectiveness of concomitant medications. Another efficacy end point of this study was to determine whether early initiation of thiopurine treatment (before 8 weeks after diagnosis) vs. conventional introduction after relapse, improved long-term prognosis.

Materials and methods

This was an observational retrospective study that included all patients under 14 years of age with newly diagnosed CD in a single Pediatric Gastroenterology and Nutrition Unit between January 2002 and December 2012, and who received EEN as first line therapy. The diagnosis of CD was based on established clinical, endoscopic, histological and radiological criteria.¹⁸ Patients diagnosed with ulcerative colitis, indeterminate colitis, eosinophilic colitis or infectious colitis were excluded.

All patients received a polymeric formula, Modulen IBD® or Resource IBD® (the same product with different name), both prepared the same way by mixing 1700 ml water with 400 g product to produce 2000 ml of formula (1 kcal/ml). The prescribed volumes were based on Schofield equation, which predicts resting energy expenditure.¹⁹ Feeds were gradually increased to target volumes in 3–5 days and patients were only allowed to drink water during treatment. EEN was given for a 6–8-week period.

The data collected were age, gender, family history of inflammatory bowel disease (IBD), time from diagnosis and concomitant pharmacological treatment. Disease phenotype was determined according to the Paris classification.²⁰ All patients were assessed at the start and end of the EEN period, the variables analyzed were weight, height, body mass index (BMI), C-reactive protein (CRP), erythrocyte sedimentation rate (ESR), albumin, complete blood count (CBC), FC (Calprest®, Eurospital, Italy) and Pediatric Crohn's Disease Activity Index (PCDAI).^{21,22} Weight and height were measured with the patient barefoot and in underwear. Samples for the determination of fecal calprotectin were collected at home by the patient the day before and were delivered refrigerated to the laboratory for immediate analysis. Clinical remission was defined as PCDAI < 10 and response as a change of more than 12.5 points from baseline PCDAI after 6–8 weeks of EEN. Normal FC levels were considered to be those below 50 µg/g of feces. Weight, height and BMI z scores were calculated using data from Spanish growth charts.²³

Statistical analysis

Variables with normal distribution were expressed as mean ± standard deviation and those without normal distribution were expressed as median and interquartile range (IQR). Kolmogorov–Smirnov test was used to evaluate normality of the distribution. Student's *t*-test and

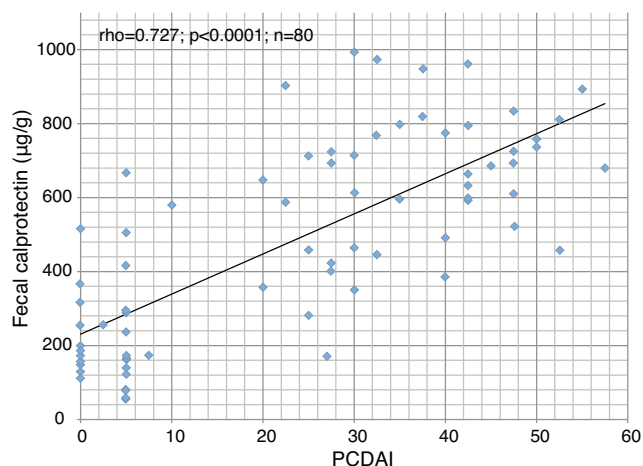


Figure 1 Correlation between fecal calprotectin and PCDAI (Spearman's Correlation Coefficient).

Wilcoxon signed-rank test were used for paired samples and Chi-square test was used to compare proportions. The estimation of correlations was performed using Spearman's Correlation Coefficient. To compare levels of FC and PCDAI a Kruskal Wallis test was applied, if the hypothesis of equality was rejected, groups were compared using the Mann Whitney test with Bonferroni correction. Survival analysis was performed with the Kaplan–Meier method. Comparison of survival curves between groups was performed with a log rank analysis. We considered a $p < 0.05$ as statistically significant.

Results

Patient characteristics

Forty patients were included; 24 were male (60%) and the age at diagnosis was 11.6 ± 3.6 years (Table 1). Six patients had a family history of IBD (CD in 4 and ulcerative colitis in 2). Time from the onset of symptoms to diagnosis was 4.2 months (IQR 2.3–12.1); it was slightly lower in the patients with family history of IBD (4.7 months (IQR 2.4–12.2) vs. 3.5 months (IQR 1.4–8.5), $p = 0.394$).

Fecal calprotectin

Baseline FC levels were $680 \mu\text{g/g}$ (IQR 524–796) and decreased significantly to $218 \mu\text{g/g}$ (IQR 149–402), $p < 0.0001$ after EEN. We found a high correlation (Fig. 1) between FC and PCDAI ($\rho = 0.727$; $p < 0.0001$). FC was significantly higher ($p = 0.04$) in patients with moderate and severe disease (Fig. 2).

Combination of EEN with pharmacological treatment

At the start of EEN, patients were receiving concomitant treatment with mesalazine (32.5%), metronidazole (17.5%) or both (45%) as adjuvant treatment (Table 1). Once the vaccination schedule had been checked and optimized, 27 of the 40 patients (67.5%) started treatment with azathioprine

Table 1 Characteristics of patients treated with exclusive enteral nutrition.

Males	24/40 (60%)	
Age at diagnosis (years)	11.6 ± 3.6	
Family history of IBD	6/40 (15%)	
Time from onset to diagnosis (months)	4.2 (IQR 2.3–12.1)	
<i>Paris classification</i>		
L1	6 (15%)	
L2	5 (12.5%)	
L3	16 (40%)	
L3 + L4 (extensive)	13 (32.5%)	
B1	39 (97.5%)	
B2	1 (2.5%)	
Perianal (p)	13 (32.5%)	
Growth retardation (G1)	11 (27.5%)	
PCDAI	PCDAI ^a	PCDAI ^b
Mild	11 (27.5%)	10 (25%)
Moderate	*	8 (20%)
Severe	29 (72.5%)	22 (55%)
<i>Treatment when EEN was started</i>		
5-ASA	13 (32.5%)	
Metronidazole	7 (17.5%)	
5-ASA and metronidazole	18 (45%)	
Metronidazole and Azithromycin	1 (2.5%)	
None	1 (2.5%)	

PCDAI, Pediatric Crohn's Disease Activity Index; CRP, C-reactive protein; ESR, erythrocyte sedimentation rate; IQR, interquartile range; IBD, inflammatory bowel disease.

^a Remission ≤10; Mild 11–30; Moderate to Severe* > 30 points. Adapted from Ref. 21.

^b Remission <10; Mild 10–27.5; Moderate 30–37.5; Severe > 37.5 points. Adapted from Ref. 22.

at a dose of 2.5–3.0 mg/kg/day in a median time of 9 days (IQR 0–19). In two cases, azathioprine had to be suspended, one due to intolerance (abdominal pain and nausea) and another due to pancreatitis; both patients were switched to 6-mercaptopurine without incident.

Response to EEN

Six patients failed to complete the 6–8 weeks of EEN; two refused to continue after 2 weeks and another four

received steroids after 3 weeks due to non-response. Except for one case requiring NG tube, all patients received EEN by mouth. Duration of EEN was 6.4 weeks (IQR 6–8.1). Of the 34 patients who completed the EEN period, 32 (94% per-protocol analysis) achieved clinical remission. This percentage fell to 80% in the intention-to-treat analysis. The compliance rate was 95%. There was a significant increase in weight, albumin, hemoglobin and hematocrit levels together with a significant decrease in FC, CRP, ESR, WBC and platelets (Table 2) at the end of EEN.

Table 2 Clinical activities before and after EEN.

	Before EEN	After EEN	p value
Mean weight z score	−0.68	−0.56	0.042
Mean height z score	−0.55	−0.47	0.275
Mean BMI z score	−0.09	0.001	0.024
PCDAI	40 (IQR 28–47.5)	5 (IQR 0–5)	<0.0001
FC (μg/g)	680 (IQR 524–796)	218 (IQR 149–402)	<0.0001
CRP (mg/l)	33.9 (IQR 16.5–67.2)	3.1 (IQR 2.4–9.0)	<0.0001
ESR (mm/h)	29 (IQR 21.5–49)	11 (IQR 7–16)	<0.0001
Albumin (g/dl)	3.2 (IQR 2.7–3.6)	4.1 (IQR 3.7–4.3)	<0.0001
Hemoglobin (g/dl)	11.4 (IQR 9.9–12.3)	12.8 (IQR 11.5–13.3)	<0.0001
Hematocrit (%)	35.2 (IQR 31.7–37.7)	38 (IQR 35–39.7)	<0.0001
WBC (×10 ³ /μL)	10.6 ± 3.6	7.7 ± 2.6	<0.0001
Platelets (×10 ³ /μL)	533 ± 140	443 ± 150	<0.0001

PCDAI, Pediatric Crohn's Disease Activity Index; CRP, C-reactive protein; ESR, erythrocyte sedimentation rate; Hb, hemoglobin; Hto, hematocrit; WBC, white blood cells; IQR, interquartile range; BMI, body mass index.

Table 3 Comparison of patients between early (<8 weeks) and subsequent (>8 weeks) immunomodulator use at diagnosis and during follow-up.

Baseline	Early IM (≤ 8 weeks)	Subsequent IM (>8 weeks)	p value
<i>Number</i>	19	13	
<i>Age at diagnosis (years)</i>	10.9 \pm 2.8	11.9 \pm 3.8	0.910
<i>Time for diagnosis (months)</i>	6.4 (IQR 3.7–12.2)	2.5 (IQR 1.4–4.1)	0.005
<i>L1</i>	4/19 (21%)	2/13 (15%)	0.530
<i>L2</i>	1/19 (5%)	1/13 (8%)	0.655
<i>L3</i>	14/19 (74%)	10/13 (77%)	0.052
<i>L4a or L4b</i>	9/19 (47%)	2/13 (15%)	0.066
<i>Growth retardation</i>	3/19 (16%)	5/13 (38%)	0.219
<i>Perianal disease</i>	8/19 (42%)	3/13 (23%)	0.233
<i>Median BMI (kg/m²)</i>	16.7 (IQR 15.4–18.5)	16 (IQR 14–19.3)	0.383
<i>Median PCDAI</i>	35 (IQR 27.5–42.5)	40 (IQR 30–46.2)	0.545
<i>Mean FC ($\mu\text{g/g}$)</i>	680 \pm 154	596 \pm 210	0.326
<i>Median CRP (mg/l)</i>	22 (IQR 16–47)	62 (IQR 23–85)	0.142
<i>Median ESR (mm/h)</i>	27 (IQR 20.7–39)	51 (IQR 22–62)	0.024
<i>Median Albumin (g/dl)</i>	3.3 (IQR 2.9–3.5)	3 (IQR 2.4–3.9)	0.588
<i>Mean Platelets ($\times 10^3 / \mu\text{L}$)</i>	506 \pm 107	547 \pm 149	0.735
<i>High TPMT levels</i>	11/13 (84.6%)	4/6 (66.7%)	0.373
<i>Intermediate TPMT levels</i>	2/13 (15.4%)	2/6 (33.3%)	0.373
<i>Follow-up</i>			
<i>Time to relapse (months)</i>	8.1 (3–18)	10 (2.6–24.6)	0.954
<i>12 months relapse rate</i>	9/19 (47.3%)	7/13 (53.8%)	0.719
<i>18 months relapse rate</i>	1/7 (14.3%)	1/5 (20%)	0.793
<i>24 months relapse rate</i>	3/6 (50%)	1/4 (25%)	0.429
<i>Mean follow up (years)</i>	2.83 (IQR 1.1–4.7)	2.57 (IQR 1.8–5.43)	0.343
<i>Supplementation with enteral formula</i>	18/19 (94.7%)	12/13 (92.3%)	0.613
<i>Time receiving supplementation (months)</i>	12 (IQR 6.9–22.37)	10.7 (IQR 3.5–66.9)	0.933
<i>Prednisone treatment during follow-up</i>	4/19 (21%)	11/13 (84.6%)	0.001
<i>Change in CD behavior (B1 to B2)</i>	0/19	1/13	0.406
<i>IFX or ADA treatment during follow-up</i>	11/19 (58%)	5/13 (38%)	0.473
<i>Time (months) from diagnosis to starting antiTNF therapy</i>	15.8 (IQR 3–23)	11 (IQR 8–57)	0.583

EEN was well tolerated in all cases and no side effects were reported during the period of use. At the end of EEN, food was introduced progressively with good acceptance.

We found no statistically significant differences in the response rate according to mild or moderate-to-severe PCDAI²¹ (91% vs. 76%, $p=0.136$), but we found differences in response rate using new PCDAI²² cut-off (90% mild, 100% moderate and 68.2% in severe CD; $p=0.05$). In terms of CD location, statistically significant differences in response were found (L1 + L3 88% vs. L2 50% $p=0.047$), although only 5 patients had L2 CD location.

Follow-up

Nineteen of the 32 patients (59.4%) who achieved clinical remission had already started early (≤ 8 weeks after starting the EEN) treatment with azathioprine (Table 3). At the end of the follow-up period (Fig. 3), 5 patients treated with azathioprine as maintenance therapy (26.3%) and 2 with no maintenance treatment (15.3%) continued in remission (difference of 11%; 95% confidence interval, -3.13 to 25.13 ; $p=0.389$). We did not find differences in time to relapse between groups (8.1 months (IQR 3–18) in early azathioprine group vs. 10 months (2.6–24.6) in late azathioprine group,

$p=0.954$). The median follow-up period was 2.9 years (IQR 1.8–4.8) in both groups.

Discussion

This study shows that EEN produces clinical and biochemical remission and weight recovery in new onset CD patients. Although we did not perform an endoscopy after the EEN, the significant decrease in the FC indicates a clear improvement in the degree of intestinal inflammation.^{12–15} Though the rate of mucosal healing achieved by EEN in some case reports are similar to that of anti-TNF- α and much higher than steroids^{9–11,24–26} they suffer from bias, as EEN is more likely to be administered to patients with recent onset or mild to moderate disease, while steroids are more likely to be administered to severe disease, and anti TNF to patients with longer duration uncontrolled disease. However, unlike steroids, EEN has a positive effect on linear growth with an increase in growth rate in the 6 months following the start of treatment and on bone mineral density.^{27–30}

In a recent study with 34 patients,¹¹ 58% of the patients treated with EEN achieved endoscopic remission (measured by SES-CD³¹) and 21% showed transmural remission measured by MR enterography. These authors showed that early

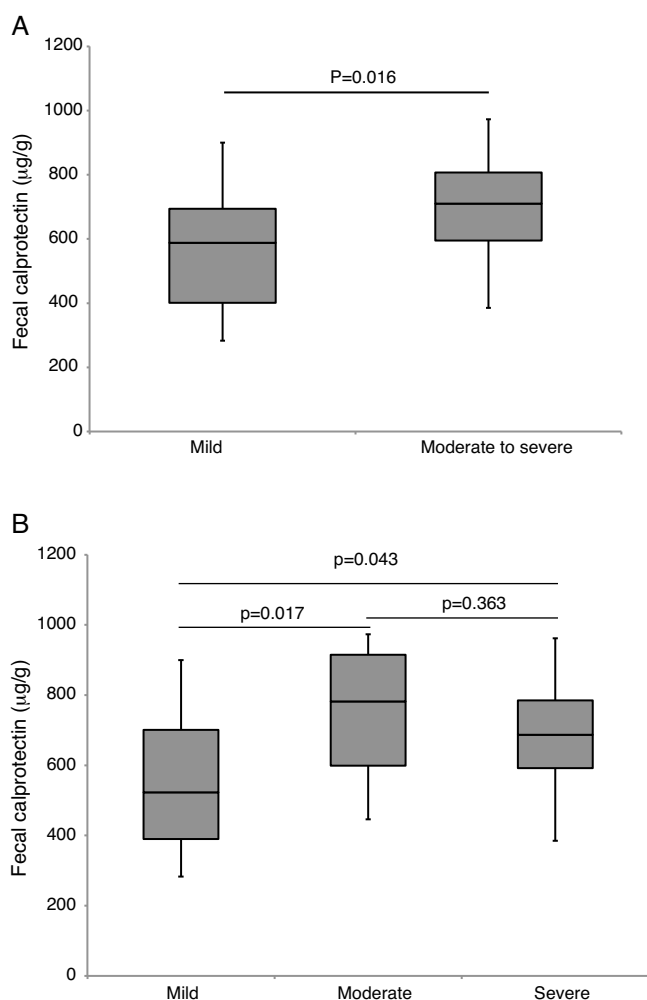


Figure 2 Differences in fecal calprotectin levels according to PCDAI. (A) PCDAI: Remission ≤ 10 ; Mild 11–30; Moderate to Severe > 30 points. Adapted from Ref. 21. (B) PCDAI: Remission < 10 ; Mild 10–27.5; Moderate 30–37.5; Severe > 37.5 points. Adapted from Ref. 22.

endoscopic remission was associated with lower rates of endoscopic relapse, less use of anti-TNF- α and fewer hospitalisations one year after diagnosis. Response was better in those with less time since diagnosis. These same authors showed that induction of remission with steroids instead of EEN increased the risk of failure to respond or loss of response to anti-TNF- α .

The efficacy of EEN was first observed at the beginning of the 1970s, when it was found that the clinical and nutritional status of some patients improved after being treated with elemental formula while awaiting surgical treatment. Although the mechanisms of EEN on intestinal inflammation in CD are not fully understood, there are a number of hypotheses, including modification of the intestinal flora, elimination of the uptake of food antigens, decrease in the intestinal synthesis of inflammatory mediators due to a reduced amount of fat in the diet or the supply of micronutrients to the inflamed gut.³²

Analysing the data from more than 25 pediatric studies, the overall efficacy of EEN is found to be 84% (95% CI,

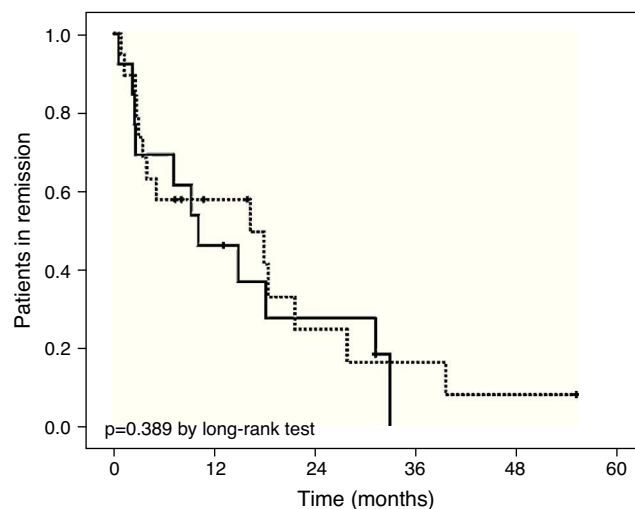


Figure 3 Kaplan-Meier (log rank) survival curve of relapse-free duration of remission. Dashed line: patients treated with azathioprine. Solid line: patients without immunomodulator treatment.

81–87%), although with different enteral formulas, clinical remission criteria and treatment duration. The compliance rate is very high, reaching 90% (95% CI, 88–92%). No differences in the remission rate or compliance have been found in relation to the enteral formula used (polymeric, semi-elemental or elemental), with glutamine supplements or with medium chain triglycerides.³³ In our series, only one type of formula was used, specific for CD, enriched with TGF- β , allowing no other food to be taken except water during the EEN period. Partial enteral nutrition (50% of calories in the form of conventional food) has been shown to be less effective than EEN.³⁴ Other approaches, such as allowing up to 20% of daily estimated calories coming from other foods, have not shown lower efficacy.³⁵

Initially it was believed that nutritional treatment was more effective in patients with ileal involvement than in those with disease located exclusively in the colon. There are currently no data to enable a correlation between response to EEN and disease phenotype.³⁶ Moreover, in our series, we found significant differences according to the location although the number of patients with exclusive colonic disease was very small.

Although our study was not designed to address the impact of early thiopurine treatment on the outcome of the disease after induction we did not find differences in terms of maintenance of remission in patients treated early (≤ 8 weeks) vs. late (> 8 weeks), see Table 3, but patients treated earlier needed less steroids during the follow-up ($p = 0.001$). Our results are in concordance to other studies performed in children^{11,37} and in adults,^{38,39} and against the results showed by Markovitz et al.⁴⁰ in a pediatric study. Probably one of the reasons for this discrepancy between pediatric studies may be because none of the patients included in Markovitz⁴⁰ study received induction therapy with EEN, and is already known that the achievement of mucosal healing with steroids treatment is unlikely. However, further studies are required before any evidence-based determination can

be made as to the most correct use of immunomodulator therapy in pediatric CD.

This study provides valuable information on the efficacy of EEN in pediatric CD. The most important limitations are the small number of patients, which probably underestimates the effect of thiopurines and the retrospective analysis of the data, making it difficult to obtain more robust information.

In conclusion, EEN administered for 6–8 weeks is effective in inducing clinical and biochemical remission, improving anthropometric parameters and decreasing the degree of mucosal inflammation. FC enables monitoring of response to EEN and control of the degree of mucosal inflammation. Patients treated early with thiopurines received less steroids during the follow-up. The EEN period is the key for updating the vaccination schedule and ordering the necessary investigations prior to starting immunosuppression treatment.

Conflict of interest

The authors have no conflicts of interest to declare.

Acknowledgments

We thank Prof. Arie Levine MD and Prof. Julián Panés MD, PhD for their helpful contributions to this manuscript.

References

- Pariante B, Cosnes J, Danese S, Sandborn WJ, Lewin M, Fletcher JG, et al. Development of the Crohn's disease digestive damage score, the Lémann score. *Inflamm Bowel Dis.* 2011;17:1415–22.
- Martin-de-Carpi J, Rodríguez A, Ramos E, Jiménez S, Martínez-Gómez MJ, Medina E, et al. Increasing incidence of pediatric inflammatory bowel disease in Spain (1996–2009): the SPIRIT registry. *Inflamm Bowel Dis.* 2013;19:73–80.
- Timmer A, Behrens R, Buderus S, Findeisen A, Hauer A, Keller KM, et al. Childhood onset inflammatory bowel disease: predictors of delayed diagnosis from the CEDATA German-language pediatric inflammatory bowel disease registry. *J Pediatr.* 2011;158:467–73.
- Griffiths AM, Nguyen P, Smith C, MacMillan JH, Sherman PM. Growth and clinical course of children with Crohn's disease. *Gut.* 1993;34:939–43.
- Neurath MF, Travis SP. Mucosal healing in inflammatory bowel diseases: a systematic review. *Gut.* 2012;61:1619–35.
- Van Assche G, Vermeire S, Rutgeerts P. The potential for disease modification in Crohn's disease. *Nat Rev Gastroenterol Hepatol.* 2010;7:79–85.
- Borrelli O, Cordischi L, Cirulli M, Paganelli M, Labalestra V, Uccini S, et al. Polymeric diet alone versus corticosteroids in the treatment of active pediatric Crohn's disease: a randomized controlled open-label trial. *Clin Gastroenterol Hepatol.* 2006;4:744–53.
- Heuschkel RB, Menache CC, Megerian JT, Baird AE. Enteral nutrition and corticosteroids in the treatment of acute Crohn's disease in children. *J Pediatr Gastroenterol Nutr.* 2000;31:8–15.
- Dziechciarz P, Horvath A, Shamir R, Szajewska H. Meta-analysis: enteral nutrition in active Crohn's disease in children. *Aliment Pharmacol Ther.* 2007;26:795–806.
- Zachos M, Tondeur M, Griffiths AM. Enteral nutritional therapy for induction of remission in Crohn's disease. *Cochrane Database Syst Rev.* 2007;CD000542.
- Grover Z, Muir R, Lewindon P. Exclusive enteral nutrition induces early clinical, mucosal and transmural remission in paediatric Crohn's disease. *J Gastroenterol.* 2014;49:638–45.
- Aomatsu T, Yoden A, Matsumoto K, Kimura E, Inoue K, Andoh A, et al. Fecal calprotectin is a useful marker for disease activity in pediatric patients with inflammatory bowel disease. *Dig Dis Sci.* 2011;56:2372–7.
- Sipponen T, Savilahti E, Kolho KL, Nuutinen H, Turunen U, Färkkilä M. Crohn's disease activity assessed by fecal calprotectin and lactoferrin: correlation with Crohn's disease activity index and endoscopic findings. *Inflamm Bowel Dis.* 2008;14:40–6.
- Jones J, Loftus EV Jr, Panaccione R, Chen LS, Peterson S, McConnell J, et al. Relationships between disease activity and serum and fecal biomarkers in patients with Crohn's disease. *Clin Gastroenterol Hepatol.* 2008;6:1218–24.
- Lewis JD. The utility of biomarkers in the diagnosis and therapy of inflammatory bowel disease. *Gastroenterology.* 2011;140:1817–26.
- Fagerberg UL, Löf L, Lindholm J, Hansson LO, Finkel Y. Fecal calprotectin: a quantitative marker of colonic inflammation in children with inflammatory bowel disease. *J Pediatr Gastroenterol Nutr.* 2007;45:414–20.
- Fagerberg UL, Löf L, Myrdal U, Hansson L, Finkel Y. Colorectal inflammation is well predicted by fecal calprotectin in children with gastrointestinal symptoms. *J Pediatr Gastroenterol Nutr.* 2005;40:450–5.
- IBD Working Group of the European Society for Paediatric Gastroenterology, Hepatology and Nutrition. Inflammatory bowel disease in children and adolescents: recommendations for diagnosis—the Porto criteria. *J Pediatr Gastroenterol Nutr.* 2005;41:1–7.
- Schofield WN. Predicting basal metabolic rate, new standards and review of previous work. *Hum Nutr Clin Nutr.* 1985;39:5–41.
- Levine A, Griffiths A, Markowitz J, Wilson DC, Turner D, Russell RK, et al. Pediatric modification of the Montreal classification for inflammatory bowel disease: the Paris classification. *Inflamm Bowel Dis.* 2011;17:1314–21.
- Hyams JS, Ferry GD, Mandel FS, Gryboski JD, Kibort PM, Kirschner BS, et al. Development and validation of a pediatric Crohn's disease activity index. *J Pediatr Gastroenterol Nutr.* 1991;12:439–47.
- Turner D, Griffiths AM, Walters TD, Seah T, Markowitz J, Pfefferkorn M, et al. Appraisal of the pediatric Crohn's disease activity index on four prospectively collected datasets: recommended cutoff values and clinimetric properties. *Am J Gastroenterol.* 2010;105:2085–92.
- Carrascosa A, Fernández JM, Fernández M, López-Siguero JP, López D, Sánchez E, et al. Estudios españoles de crecimiento; 2010. Available from: <http://www.estudiosdecrecimiento.es/estudio-transversal.html>
- Berni Canani R, Terrin G, Borrelli O, Romano MT, Manguso F, Coruzzo A, et al. Short- and long-term therapeutic efficacy of nutritional therapy and corticosteroids in paediatric Crohn's disease. *Dig Liver Dis.* 2006;38:381–7.
- Beattie RM, Schiffman EJ, Donnet-Hughes A, Huggett AC, Domizio P, MacDonald TT, et al. Polymeric nutrition as the primary therapy in children with small bowel Crohn's disease. *Aliment Pharmacol Ther.* 1994;8:609–15.
- Fell JM, Paintin M, Arnaud-Battandier F, Beattie RM, Hollis A, Kitching P, et al. Mucosal healing and a fall in mucosal pro-inflammatory cytokine mRNA induced by a specific oral polymeric diet in paediatric Crohn's disease. *Aliment Pharmacol Ther.* 2000;14:281–9.

27. Soo J, Malik B, Turner J, Persad R, Wine E, Siminoski K, et al. Use of exclusive enteral nutrition is just as effective as corticosteroids in newly diagnosed pediatric Crohn' disease. *Dig Dis Sci.* 2013;58:3584–91.
28. Sanderson IR, Udeen S, Davies PS, Savage MO, Walker-Smith JA. Remission induced by an elemental diet in small bowel Crohn's disease. *Arch Dis Child.* 1987;62:123–7.
29. Newby EA, Sawczenko A, Thomas AG, Wilson D. Interventions for growth failure in childhood Crohn's disease. *Cochrane Database Syst Rev.* 2005:CD003873.
30. Thomas AG, Taylor F, Miller V. Dietary intake and nutritional treatment in childhood Crohn's disease. *J Pediatr Gastroenterol Nutr.* 1993;17:75–81.
31. Daperno M, D'Haens G, Van Assche G, Baert F, Bulois P, Maunoury V, et al. Development and validation of a new, simplified endoscopic activity score for Crohn's disease: the SESCD. *Gastrointest Endosc.* 2004;60:505–12.
32. Griffiths AM. Enteral nutrition in the management of Crohn's disease. *J Parenter Enteral Nutr.* 2005;29: S108–12.
33. Navas-López VM. Tratamiento general del brote de enfermedad de Crohn. In: Sánchez C, Marín-Jiménez I, Tolín M, Morales JL, editors. *Enfermedad inflamatoria intestinal en pediatría.* Madrid: Ergon; 2012. p. 257–68.
34. Johnson T, Macdonald S, Hill SM, Thomas A, Murphy MS. Treatment of active Crohn's disease in children using partial enteral nutrition with liquid formula: a randomised controlled trial. *Gut.* 2006;55:356–61.
35. Whitten KE, Rogers P, Ooi CY, Day AS. International survey of enteral nutrition protocols used in children with Crohn's disease. *J Dig Dis.* 2012;13:107–12.
36. Buchanan E, Gaunt WW, Cardigan T, Garrick V, McGrogan P, Russell RK. The use of exclusive enteral nutrition for induction of remission in children with Crohn's disease demonstrates that disease phenotype does not influence clinical remission. *Aliment Pharmacol Ther.* 2009;30:501–7.
37. Punati J, Markowitz J, Lerer T, Hyams J, Kugathasan S, Griffiths A, et al. Pediatric IBD collaborative research group. Effect of early immunomodulator use in moderate to severe pediatric Crohn disease. *Inflamm Bowel Dis.* 2008;14:949–54.
38. Panés J, López-Sanromán A, Bermejo F, García-Sánchez V, Esteve M, Torres Y, et al. Early azathioprine therapy is no more effective than placebo for newly diagnosed Crohn's disease. *Gastroenterology.* 2013;145:766–74.
39. Cosnes J, Bourrier A, Laharie D, Nahon S, Bouhnik Y, Carbonnel F, et al. Early administration of azathioprine versus conventional management of crohn's disease: a randomized controlled trial. *Gastroenterology.* 2013;145:758–65.
40. Markowitz J, Grancher K, Kohn N, Lesser M, Daum F. A multicenter trial of 6-mercaptopurine and prednisone in children with newly diagnosed Crohn's disease. *Gastroenterology.* 2000;119:895–902.