

Melanoma in prepuberal children: Diagnostic and therapeutic challenges[☆]



Melanoma en niños prepuberales: dificultades diagnósticas y terapéuticas

To the editor:

Melanoma is infrequent in children, accounting to less than 3% of paediatric cancers, and particularly rare in children aged less than 5 years.¹ Due to a low level of suspicion and its clinical similarity with other diseases, its diagnosis is usually delayed. Although its presentation in children is different compared to adults, there are no specific paediatric management guidelines for melanoma.¹

We present the case of female patient aged 12 months with no relevant previous history of disease. She initially presented with a lesion in the right malleolus measuring 0.5 cm in diameter (Fig. 1A), which subsequently progressed to an irregular erythematous dome-shaped nodular lesion (Fig. 1B). In the span of 13 months, the lesion was diagnosed as a traumatic injury, a common wart and telangiectatic granuloma, and the patient underwent a variety of topical treatments, cryotherapy and eventually excision with a biopsy. The histological examination revealed proliferation of atypical fusiform melanocytes with a high mitotic index (>20%). The immunohistochemical assay (Vysis Melanoma FISH Probe kit) revealed overexpression of RREB1 and CNND1 in 80% and 40% of cells, respectively, and the presence of 2 copies per nucleus of Cep6 without amplification of MYB. Eighty percent of cells were Bcl-2 positive. Testing did not detect changes in the BRAF gene (V600E) nor copying number gains in chromosome 11p. The surgical margins, negative, were increased to 4 and 7 mm from the edges due to a Breslow thickness of 2.25 mm, and a sentinel lymph node (SLN) biopsy was performed, revealing subcapsular infiltration. The patient underwent a whole-body positron emission tomography/computed tomography that had negative results. The decision was made to perform a right-side inguinal completion lymph node dissection (negative), with no histological evidence of infiltration in the lymph nodes. The patient received adjuvant therapy with pegylated interferon alfa-2b at a dose of 6 µg/kg/week intravenously for 2 months and 3 µg/kg/week subcutaneously for 11.5 months, which was well tolerated. Ten years later, the patient is still in remission.

Paediatric melanoma is very rare, accounting for less than 1% of diagnosed cases of melanoma, and even less frequent in prepubertal children.² The differential diagnosis is particularly challenging due to its clinical and histological overlap with other diseases, such as the spectrum of spitzoid

tumours and other nonmelanoma skin tumours, requiring participation of an experienced dermatologist and pathologist and molecular testing. Diverging significantly of the characteristic features of melanoma in adults, there are paediatric ABCDE criteria found in less than 40% of cases²: amelanosis, bleeding/ulceration, uniform colour, variable diameter and de novo development. It is typically located in the head, neck or extremities. It usually develops in patients with no pre-existing risk factors.² There are 3 differentiated subtypes: melanoma arising on congenital nevi, with a significant potential for distant metastasis; conventional melanoma, clinically and molecularly similar to adult-type melanoma; and, as was the case in our patient, spitzoid melanoma, with aggressive locoregional involvement but rarely resulting in distant metastasis.^{2,3} The prognosis of melanoma at this age is generally excellent. Table 1 summarises the most relevant paediatric melanoma case series.

Immunohistochemical assays like the one used in our study have exhibited a sensitivity of 85%–100% and a specificity of 95% in discriminating between malignant and benign spitzoid lesions. Gains in 6p25 (RREB1) in more than 63% of cells and in 11q13 (CCND1) in more than 38%, as occurred in our patient, are associated with melanoma and not to benign lesions.^{2,4} Chromosomal rearrangements leading to kinase fusions (ROS1, NTRK1, ALK, BRAF and RET) are present in 50% of melanomas and can be found in other spitzoid neoplasms, as well as changes in HRAS.^{3,5} The diagnosis is ruled out in the case of the BRAF^{V600E} and NRAS variants, characteristic of conventional melanoma. Overexpression of Bcl-2 has not proven useful for diagnosis.⁶ Markers of a poor prognosis are yet unknown, and TERT-p changes and homozygous deletion of 9p21 have been detected in spitzoid melanomas with haematogenous dissemination.³

Despite its different presentation and course, there are no specific guidelines for paediatric melanoma. First-line treatment consists of wide local excision with adequate margins. The indication of sentinel lymph node biopsy is under debate, and followup can be conducted by means of ultrasound.² In case of regional involvement, regional lymph node excision is no longer considered indicated due to the significant associated morbidity in the absence of prognostic value.² The use of interferon alfa, highly toxic in adults but safer and better tolerated in children, is also controversial.^{1,2} The presence of specific variants allows targeted treatments, with BRAF being such an example. Kinase inhibitors may be useful for treatment of spitzoid melanoma with kinase fusion.⁵

Melanomas are exceptional in the paediatric age group, particularly in prepubertal children, who are more likely to develop spitzoid melanoma. Its differential diagnosis is broad, as it can be confused with other nonmelanoma and spitzoid tumours, and therefore requires a high level of suspicion. It exhibits an aggressive locoregional pattern, in spite of which the prognosis is good. Local treatment is based on the excision of the tumour with wide surgical margins. The molecular profile, markers of metastatic potential and role of adjuvant therapy in this disease have yet to be clearly established.

[☆] Please cite this article as: Larrosa C, Torrelo A, Madero L, Lassaletta A. Melanoma en niños prepuberales: dificultades diagnósticas y terapéuticas. An Pediatr. 2022;96:352–357.

Table 1 Review of the most relevant paediatric case series of melanoma in the literature.

Study	Study period	n	Age (years)	Breslow	Histological subtype	Sentinel lymph node biopsy	Stage	Treatment	Survival	Conclusions
Brecht et al (2018)	2002–2012	219	1–14: 51.6%	<1 mm: 27.8%	SSM: 31.9%	77% overall	I	Surgery: 100%	1-year EFS: 93.6%	Same survival in stage III patients that did and did not receive systemic therapy
			15–18: 46.6%	1.01–2 mm: 21.46% 2.01–4 mm: 19.63% >4 mm: 21.46%	Nodular: 20.5% Spitzoid: 18.7% Other: 19.2% Not specified: 9.65%	76% in >0.75 mm (37.5%+)	: 42.47% II: 26.94% III: 20.09% IV: 4.6% NOT REPORTED 5.9%	CTX (7) IFN-alfa (19) Immunotherapy (4) CTX + IFN alfa (2) CTX + vemurafenib (1) RT (3) RCLND	3-year EFS: 84% 1-year OS: 98% 3-year OS: 91,4%	
Parikh et al (2017)	1973–2010	917	<10: 12%	<1 mm: 59%	SSM: 33%	15.9% (34%+)	I: 69%		10-year OS: no SLNB (99%) vs SLNB (100%) vs SLNB + RCLND (80%) P <.0001	Sentinel lymph node biopsy did not have an impact on survival
			10–19: 88%	1–2 mm: 17.5% 2–4 mm: 15% >4 mm: 8%	Nodular: 7% Malignant, NOS: 52% Desmoplastic: 0.2% Other: 7.5%		II: 6.7% III: 15% IV: 0.7%	Survival SLNB yes/no: Localized 96 vs 98% (P 0.65) Regional 100 vs 86% (P?) Metastatic 50 vs 50% P 0.99		
Richards et al (2016)	1998–2012	84 744	<18 y: 657 (0.8%)	<18 y vs >18 y	<18 vs >18 y	<18 y vs >18 y	<18 vs >18 y	Immunotherapy: 17.1 vs 3.8%	5-y OS HR 0.92 vs 0.68 adults	Paediatric patients had more advanced disease at diagnosis, in spite of which they had better outcomes
			>18 y 98.2%	1.52 mm vs >0.15 mm Ulceration: 14.7 vs –8.4%	NOS: 56.5 vs 58.7% SSM: 24 vs 19.9% Nodular: 9 vs 9.8% Other: 9.4 vs 1.5%	70% (38.5%+) vs 45% (18.5%)	I: 47.7 vs 60.1% II: 22.9 vs 25.2% III: 28.3 vs 11.8% IV: <1 vs 2.9%	RT: 3.7 vs 4.8%	10-y OS HR 0.88 vs 0.49 adults	
Mitkov et al (2016)	2000–2015	86	<17: 50%	1.2 mm median	SSM: 47.8%	Not documented	I: 51.1%	Not documented	Not analysed	Benign-appearing paediatric skin lesions with a history of evolution, bleeding, or ulceration should raise suspicion for melanoma
			17-21 49%	Clark* I: 4.8%	Nodular: 8.7% Spitzoid: 16.3%		II: 19.1% III: 17.1%			

Table 1 (Continued)

Study	Study period	n	Age (years)	Breslow	Histological subtype	Sentinel lymph node biopsy	Stage	Treatment	Survival	Conclusions
Lorimer et al (2016)	1998–2011	4968	<10: 6.2%	II: 33.7% III: 18.1% IV: 38.6% V: 4.8% <10: >2 mm 37%	Not specified: 27.2%	<10: 63%	IV: 12.8%	<10	5-year OS:	No differences in survival based on IFN, SLNB, lymph node dissection. A positive SLNB had no prognostic value in children <10 years. Greater survival in children vs adolescents
			>10: 73.6%	>10: >2 mm 14%	(42%+)	I: 49.6%	IFN: 5.14%	<10		
Kim et al (2016)	2004–2011	310	<20: 100%	Median: 1.5 mm	Not documented	84% (28%+)	III: 37.5%	RT: 1.41%	SLN+: 96%	SLNB is useful for risk stratification, but positive-node status is not associated with a decreased overall survival in children. Greater survival in paediatric patients compared to adults with the same stage of disease. Poorer survival with greater depth, nodular melanoma and more advanced disease.
			>20: 44.7% (10.8%+)	IV: 17.65% >10	>10	IFN: 10.20%	>10 SLN + vs – HR 4.82 (CI 3.38–6.67) Cox regression RR IFN: 0.77 (0.74–0.80) RT: 2.60 (2.28–2.96) CTX 1.33 (1.25–1.41) SLN +: 7-year OS 88 vs 66% adults			
Brecht et al (2015)	1983–2011	443	<18: 80.7%	<1 mm: 60%	Superficial: 4%	16%	I-II: 93%	Wide local excision	5-year OS: 94.8%	REST NOT REPORTED Not analysed as variable involved in OS
			<10: 9.3%	>2 mm: 16.5%	Nodular: 1% Unknown: 5%	(24%+)	III: 5.7% IV: 0.7%	RCLND	Ulceration: 65.6 vs 99.2% Superficial (100%) vs nodular (77.9%) vs other (96.9%) Clark level (I, II, III) 99.1% vs (IV, V) 87.1% Breslow <1 mm (99.1%) vs 1–2 mm (91.4%) vs >2 mm (84.9%) Stage I (98.5%), II (91.1%), III/IV (53%). OS 85%	
Cordoro et al (2013)	1984–2009	70	<10: 27%	<10: 3.9 mm	Not classified	15% (17%+)	I-II: 0%	Wide local excision	OS 85%	Melanoma characteristics in patients <10 years:
			10–20: 72%	>10: 2.4 mm (median)	III: 65.4%	RCLND	Breslow >1 mm 20%	Greater thickness, amelanosis, bleeding, aggressive		

Table 1 (Continued)

Study	Study period	n	Age (years)	Breslow	Histological subtype	Sentinel lymph node biopsy	Stage	Treatment	Survival	Conclusions
Averbook et al (2012)	1973–2001	365	<10: 6.8%	<10: 2.66 mm	Not analysed	36.6% (25.4%+)	IV: 34.6%	IFN	Clark <III 90% Clark >III 40% Metastasis: 0% RCLND: 50% IFN: 50% Stage Ib 90% Stage Iib 80% Stage IV 60%	Similar effect of depth, ulceration, lymph node involvement and stage on melanoma prognosis in paediatric patients and adults. Greater survival in patients <10 years
			>10: 93.2%	>10: 1.59 mm			<10:	Not documented	10-year OS <10: 100%	
Moore-Olufemi et al (2011)	1992–2006	109	<10: 23%	<10: >2 mm: 57%	Spitzoid:	<10: 76% (53% +)	IV: 2.5%	Wide local excision	10-year OS >10: 74.6%	Prepubertal patients had greater Breslow and more frequent SLN involvement. Higher incidence of paediatric melanoma in patients of Hispanic/Latino ancestry. SLN + status and greater Breslow depth inversely correlated with OS and EFS
			10-18: 77%	>10: >2 mm: 23%			<10: 12% >10 5%		>10: 52% (34% +)	
					No Spitzoid:		II: 9%		EFS: 73%. 88% in SLN + patients <10 y and 54% for patients >10 y	
					<10 56% >10 84% Mixed: <10 20% >10 6% Atypical: <10 12% >10 y 6%	III-IV: 57% >10: I: 56% II: 21% III-IV: 23%				

Table 1 (Continued)

Study	Study period	n	Age (years)	Breslow	Histological subtype	Sentinel lymph node biopsy	Stage	Treatment	Survival	Conclusions
Austin et al (2013)	1998–2007	1447	<10: 11%	<10:	Superficial: 46%	<10: 8.7%	I-II: 73.2%	Not documented	Not documented	Paediatric patients had greater Breslow thickness and more frequent SLN involvement
			>10–18 y: 89%	≤1 mm: 21%	Nodular: 5%	(12.6% +)	III-IV: 26.8%			
				1.01–2.0 mm: 4%	Desmoplastic: 3%		III: 21%			
				2.01–4.0 mm: 7%	Not specified: 46%		IV: 5.8%			
				4.0 mm: 6%						
				10–18:						
				≤1 mm: 39%						
				1.01–2.0 mm: 6%						
				2.01–4.0 mm: 5%						
				4.0 mm: 3%						

CI, confidence interval; RCLND, regional completion lymph node dissection; CTX, chemotherapy; EFS, event-free survival; HR, hazard ratio; IFN, interferon; NOS, not otherwise specified; OS, overall survival; RT, radiation therapy; SLN, sentinel lymph node; SLNB, sentinel lymph node biopsy; SSM, superficial spreading melanoma; y, years.

Brecht IB, De Paoli A, Bisogno G, Orbach D, Schneider DT, Leiter U, et al Pediatric patients with cutaneous melanoma: A European study. *Pediatr Blood Cancer*. 2018;65:1–8.

Parikh PP, Tashiro J, Rubio GA, Sola JE, Neville HL, Hogan AR, et al Incidence and outcomes of pediatric extremity melanoma: A propensity score matched SEER study. *J Pediatr Surg [Internet]*. 2018;53:1753–60.

Richards MK, Czechowicz J, Goldin AB, Gow KW, Doski J, Goldfarb M, et al Survival and surgical outcomes for pediatric head and neck melanoma. *JAMA Otolaryngol - Head Neck Surg*. 2017;143:34–40.

Mitkov M, Chrest M, Diehl NN, Heckman MG, Tollefson M, Jambusaria-Pahlajani A. Pediatric melanomas often mimic benign skin lesions: A retrospective study. *J Am Acad Dermatol [Internet]*. 2016;75:706–11.e4.

Lorimer PD, White RL, Walsh K, Han Y, Kirks RC, Symanowski J, et al Pediatric and Adolescent Melanoma: A National Cancer Data Base Update. *Ann Surg Oncol*. 2016;23:4058–66.

Kim J, Sun Z, Gulack BC, Adam MA, Mosca PJ, Rice HE, et al Sentinel lymph node biopsy is a prognostic measure in pediatric melanoma. *J Pediatr Surg [Internet]*. 2016;51:986–90.

Brecht IB, Garbe C, Gefeller O, Pfahlberg A, Bauer J, Eigentler TK, et al 443 paediatric cases of malignant melanoma registered with the German Central Malignant Melanoma Registry between 1983 and 2011. *Eur J Cancer*. 2015;51:861–8.

Cordoro KM, Gupta D, Frieden IJ, McCalmont T, Kashani-Sabet M. Pediatric melanoma: Results of a large cohort study and proposal for modified ABCD detection criteria for children. *J Am Acad Dermatol [Internet]*. 2013;68:913–25.

Averbook BJ, Lee SJ, Delman KA, Gow KW, Zager JS, Sondak VK, et al Pediatric melanoma: Analysis of an international registry. *Cancer*. 2013;119:4012–9.

Moore-Olufemi S, Herzog C, Warneke C, Gershenwald JE, Mansfield P, Ross M, et al Outcomes in pediatric melanoma: Comparing prepubertal to adolescent pediatric patients. *Ann Surg*. 2011;253:1211–5.

Austin MT, Xing Y, Hayes-Jordan AA, Lally KP, Cormier JN. Melanoma incidence rises for children and adolescents: An epidemiologic review of pediatric melanoma in the United States. *J Pediatr Surg [Internet]*. 2013;48:2207–13.

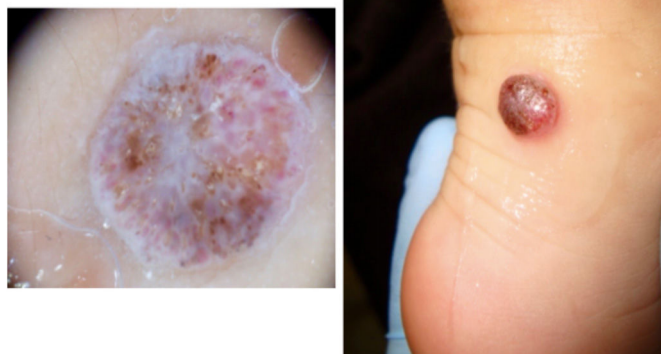


Figure 1 A) Dermoscopy image: pseudovascular lesion. B) Irregular dome-shaped lesion with bright erythematous coloration.

References

1. Stefanaki C, Chardalias L, Soura E, Katsarou A, Stratigos A. Paediatric melanoma. *J Eur Acad Dermatol Venereol*. 2017;31:1604–15.
2. Merkel EA, Mohan LS, Shi K, Panah E, Zhang B, Gerami P. Paediatric melanoma: clinical update, genetic basis, and advances in diagnosis. *Lancet Child Adolesc Heal*. 2019;3:646–54. [http://dx.doi.org/10.1016/S2352-4642\(19\)30116-6](http://dx.doi.org/10.1016/S2352-4642(19)30116-6).
3. Lu C, Zhang J, Nagahawatte P, Easton J, Lee S, Liu Z, et al. The genomic landscape of childhood and adolescent melanoma. *J Invest Dermatol*. 2015;135:816–23. <http://dx.doi.org/10.1038/jid.2014.425>.
4. Requena C, Rubio L, Traves V, Sanmartín O, Nagore E, Llombart B, et al. Fluorescence in situ hybridization for the differential diagnosis between Spitz naevus and spitzoid melanoma. *Histopathology*. 2012;61:899–909.
5. Wiesner T, Kutzner H, Cerroni L, Jr MJM, Klaus J, Murali R, et al. Genomic aberrations in spitzoid tumours and their implications for diagnosis, prognosis and therapy. 2017;48:113–31.
6. Stefanaki C, Stefanaki K, Antoniou C, Argyrakos T, Patereli A, Stratigos A, et al. Cell cycle and apoptosis regulators in Spitz

nevi: comparison with melanomas and common nevi. *J Am Acad Dermatol*. 2007;56:815–24.

Cristina Larrosa^{a,*}, Antonio Torreló^b, Luis Madero^a, Álvaro Lassaletta^a

^a *Unidad de Onco-Hematología pediátrica y Trasplante de Progenitores Hematopoyéticos, Hospital Universitario Niño Jesús, Madrid, Spain*

^b *Unidad de Dermatología, Hospital Universitario Niño Jesús, Madrid, Spain*

* Corresponding author.

E-mail address: cristinalarrospinos@gmail.com (C. Larrosa).

<https://doi.org/10.1016/j.anpede.2021.01.010>

2341-2879/ © 2022 Asociación Española de Pediatría. Published by Elsevier España, S.L.U. This is an open access article under the CC BY-NC-ND license (<http://creativecommons.org/licenses/by-nc-nd/4.0/>).

SARS-CoV-2 PCR negativization in respiratory sample in patients with need for recurring assistance[☆]



Negativización de PCR a SARS-CoV-2 en muestra respiratoria en pacientes con necesidad de asistencia recurrente

To the editor:

In addition to its impact in terms of morbidity and mortality (especially in adult patients), the SARS-CoV-2/coronavirus

disease 2019 (COVID-19) pandemic has threatened to collapse established ongoing care pathways. Thus, the detection of SARS-CoV-2 in patients that require regular contact with the health care system has compelled the development of safe strategies for clinical follow-up and assessment of negative conversion.

We analysed data from patients given a diagnosis of SARS-CoV-2 infection confirmed by polymerase chain reaction (PCR) testing of respiratory secretion specimens between March 11 and April 30, 2020 in a tertiary care children's referral hospital in Barcelona (Spain) that underwent repeated PCR tests in nasopharyngeal samples to verify negative conversion. We conducted the study in patients that received ongoing care in day hospitals, with scheduled hospitalizations, etc. To carry out clinical follow-up and monitoring for negative conversion, and after the re-entry of the patient in the usual care pathway, a safe care pathway was created to performed PCR tests at regular intervals, ide-

[☆] Please cite this article as: Bassets-Bosch A, Raya-Muñoz J, Wörner-Tomasa N, Melendo-Pérez S, González-Peris S. Negativización de PCR a SARS-CoV-2 en muestra respiratoria en pacientes con necesidad de asistencia recurrente. *An Pediatr (Barc)*. 2022;96:357–359.