



ORIGINAL ARTICLE

Impact of air pollution in paediatric consultations in Primary Health Care: Ecological study[☆]

Raquel Martín Martín^a, Marciano Sánchez Bayle^{b,*}

^a Centro de Salud Reina Victoria, Madrid, Spain

^b Sección de Pediatría, Hospital Infantil del Niño Jesús, Madrid, Spain

Received 13 March 2017; accepted 30 June 2017

Available online 3 July 2018

KEYWORDS

Environmental pollution;
Respiratory diseases;
Primary care

Abstract

Objective: To study the correlation between the levels of environmental pollutants and the number of paediatric consultations related to respiratory disease in Primary Health Care.

Patients and methods: An ecological study is performed, in which the dependent variable analysed was the number of paediatric consultations in an urban Primary Health Care centre in Madrid over a 3 year period (2013–2015), and specifically the consultations related to bronchiolitis, recurrent bronchospasm, and upper respiratory diseases. The independent variables analysed were the levels of environmental pollutants. Coefficients of correlation and multiple lineal regressions were calculated. An analysis has been carried out comparing the average of paediatric consultations when the levels of nitrogen dioxide (NO₂) were higher and lower than 40 µg/m³.

Results: During the period of the study, there were a total of 52,322 paediatric consultations in the health centre, of which 6,473 (12.37%) were related to respiratory diseases. A positive correlation was found between SO₂, CO, NO_x and NO₂ and benzene levels and paediatric consultations related to respiratory diseases, and a negative correlation with temperature. The number of consultations was significantly higher when NO₂ levels exceeded 40 µg/m³. In the multiple lineal regression ($P = .0001$), the correlation was only positive between consultations and NO₂ levels (3.630, 95% CI: 0.691–6.570), and negative with temperature (–5.957, 95% CI: –8.665 to –3.248).

Conclusions: NO₂ environmental pollution is related to an increase in respiratory diseases in children. Paediatricians should contribute to promote an improvement in urban air quality as a significant preventive measure.

© 2017 Asociación Española de Pediatría. Published by Elsevier España, S.L.U. This is an open access article under the CC BY-NC-ND license (<http://creativecommons.org/licenses/by-nc-nd/4.0/>).

[☆] Please cite this article as: Martín Martín R, Sánchez Bayle M. Impacto de la contaminación ambiental en las consultas pediátricas de Atención Primaria: estudio ecológico. An Pediatr (Barc). 2018;89:80–85.

* Corresponding author.

E-mail address: msanba49@gmail.com (M. Sánchez Bayle).

PALABRAS CLAVE

Contaminación ambiental;
Enfermedades respiratorias;
Atención primaria

Impacto de la contaminación ambiental en las consultas pediátricas de Atención Primaria: estudio ecológico

Resumen

Objetivo: Estudiar la relación existente entre los niveles de contaminantes ambientales y la demanda por enfermedad respiratoria en las consultas pediátricas de Atención Primaria.

Pacientes y métodos: Estudio ecológico en el que la variable dependiente analizada ha sido la demanda en las consultas pediátricas de un centro de salud urbano de Madrid durante 3 años (2013-2015) por bronquiolitis, episodios de broncoespasmo y procesos respiratorios de vías altas. Como variables independientes se estudiaron los valores de contaminación ambiental. Se calcularon coeficientes de correlación y regresión lineal múltiple. Se comparó el promedio de consultas cuando los valores de dióxido de nitrógeno (NO₂) eran superiores e inferiores a 40 µg/m³.

Resultados: Durante el periodo de tiempo estudiado hubo un total de 52.322 consultas pediátricas en el centro de salud, de las cuales 6.473 (12,37%) lo fueron por procesos respiratorios. Se encontró correlación positiva entre los niveles de SO₂, CO, NO₂, NOx, benceno y el número de consultas por procesos respiratorios y negativa con la temperatura y el O₃. El número de consultas por enfermedad respiratoria fue significativamente mayor cuando los niveles de NO₂ superaban los 40 µg/m³. En la regresión lineal múltiple (p < 0,0001) solo se mantuvo la relación positiva de las consultas con los niveles de NO₂ (3,630; IC 95%: 0,691-6,570) y negativa con la temperatura (-5,957; IC 95%: -8,665 a -3,248).

Conclusiones: La contaminación ambiental por NO₂ está relacionada con el aumento de la enfermedad respiratoria en la infancia. Los pediatras deberíamos contribuir a propiciar la mejora de la calidad del aire como una importante medida preventiva.

© 2017 Asociación Española de Pediatría. Publicado por Elsevier España, S.L.U. Este es un artículo Open Access bajo la licencia CC BY-NC-ND (<http://creativecommons.org/licenses/by-nc-nd/4.0/>).

Introduction

The World Health Organization (WHO) has been warning for years of the deleterious effects of environmental pollution on human health.¹ Global climate change is an indisputable fact, and human activity (industrial, commercial, residential, etc.) is a significant contributor to this change.² International organisations such as the European Environment Agency disseminate data periodically and warn that southern Europe will be one of the regions that will be most affected by the consequences of climate change.³ Environmental factors and weather are determinants of the health of living organisms,⁴⁻⁶ so it is exceedingly worrisome that seasons that used to be cold are now warm, that air quality regulations are often overlooked,^{7,8} that a high percentage of vehicles in circulation are highly polluting and, ultimately, that pollution in cities has become the subject of press and broadcast news headlines.⁹

The paediatric population is particularly vulnerable to environmental conditions¹⁰ due to social factors, as children spend long periods of time outdoors and are thus significantly exposed to pollution. Furthermore, they have distinct anatomical and physiological characteristics, and poorly developed defence mechanisms. More specifically, their respiratory tract and immune system are immature, the calibre of their airways is smaller and their respiratory rate greater compared to adults, so they inhale larger volumes of air per kilogram of body weight, all of which amplifies

the effects of pollutants in their bodies and overwhelms their capacity to neutralise and eliminate these environmental pollutants. Despite the importance of this issue, few studies have analysed the impact on children's health¹¹ of exposure to high levels of pollutants, such as particulate matter smaller than 2.5 microns (PM_{2.5}) and 10 microns (PM₁₀), nitrogen dioxide (NO₂), nitric oxide (NO), ozone (O₃), carbon monoxide (CO), sulphur dioxide (SO₂), hydrocarbons such as benzene or nonmethane hydrocarbons (NMHCs).¹²

Considering the importance of air quality in our health and the considerable economic burden of the care provided for pollution-related diseases, we aimed to analyse the impact of environmental pollution in the number of paediatric primary care (PC) visits due to upper respiratory tract infections, bronchospasm and bronchiolitis.

Patients and methods

We conducted an ecological study in which we analysed data obtained from the software applications Seguimiento de Objetivos de Atención Primaria (Primary Care Objectives Followup [e-SOAP]) and Consult@web. These applications are available in the digital network available to PC professionals in the Community of Madrid and allow access to patient health records. The indicators we consulted through e-SOAP provided us with information regarding the population served and health care delivery, that is, the monthly number of visits and number of patient consultations per

provider per day at different points in time. Consult@web is an online platform that allows health professionals to access the medical records of patients. The data we retrieved from Consult@web referred to upper respiratory tract infection, bronchiolitis and bronchospasm episodes documented in the electronic health records. We searched both databases to retrieve information on the care delivered to the catchment population of 3 paediatrics clinics in a primary care centre in the centre of the city of Madrid between January 1, 2013 and December 31, 2015. We obtained the data pertaining to environmental pollution from the website of the City Council of Madrid¹³ (Department of Environment and Transportation), Directorate General of Sustainability and Transportation Planning, Department of Air Protection. We collected data for the levels of the following pollutants in the months under study: NO₂, NO, PM_{2.5} and PM₁₀, O₃, CO, benzene, SO₂, methane (CH₄), NMHCs and temperature.

We performed the statistical analysis of the data with the software SPSS version 15.0. We summarised the basic data, expressed as mean and standard deviations in case of quantitative variables and as absolute frequencies and percentages in case of qualitative variables. We calculated 95% confidence intervals (CIs).

We compared quantitative variables by means of the Mann-Whitney *U* test after checking the normality assumption with the Kolmogorov-Smirnov test. We compared qualitative variables by means of the chi square test. We defined statistical significance as a *P*-value of less than .05 in any of the tests.

We compared all the quantitative variables under study, calculating the Spearman correlation coefficient.

Subsequently, we performed a multivariate analysis by means of multiple linear regression, starting with the full model and with backward elimination of variables that were not statistically significant (*P* < .05).

Results

During the period under study, the primary care centre received a total of 52,322 paediatric visits. Of these, 6473 (12.37%) corresponded to respiratory problems. The reasons for the visits due to respiratory problems were bronchiolitis in 827 visits, upper respiratory tract disease in 5125 and bronchospasm episodes in 521. The age of the patients ranged from 0 to 14 years, with a mean of 4.31 years, a standard deviation (SD) of 2.97 and a median of 3. The mean annual temperature in the years under study was: 15.93 °C in 2013 (SD, 7.84), with a maximum of 28.10 °C in June and a minimum of 6.8 °C in January; 16.95 °C in 2014 (SD, 9.94), with a maximum of 26.9 °C in August and a minimum of 8 °C in February; 16.98 °C in 2015 (SD, 7.56), with a maximum of 30 °C in June and a minimum of 6.9 °C in January.

Table 1 shows the descriptive analysis of the variables under study. The mean number of visits per month was 1453.38. There was significant variation between months in the number of visits and level of pollutants (as evinced by the difference between the maximum and minimum values in all of these variables).

Table 2 presents the Spearman correlation coefficients obtained in the analysis. The number of visits due to respiratory problems was the variable for which we found a

significant correlation with temperature and all the environmental pollutant variables under study. The total number of visits was the variable with the fewest significant correlations with specific pollutants.

When we analysed the impact of NO₂ levels greater than 40 µg/m³, we found that the number of visits due to respiratory problems was significantly greater in months in which levels exceeded this threshold, as can be seen in Table 3 (the months with NO₂ levels >40 µg/m³ were: December and October in all 3 years under study, January and November in 2 years, and March in 1 year).

Table 4 shows the beta coefficients with their corresponding 95% confidence intervals, *P*-values and coefficients of determination (*R*²) of the multiple regression model of the visits due to respiratory disease.

Fig. 1 shows the ROC curve of the values obtained through multiple linear regression of the number of visits for respiratory problems exceeding the monthly average in our study.

Discussion

Environmental pollution refers to the presence in the air we breathe of a variety of chemical and biological components that are particularly deleterious to our health. The updated State of Global Air/2017,¹⁴ a special report on global exposure to air pollution, and other evidence gathered to date suggests that environmental pollution has contributed to the increase in the incidence of respiratory disease in children, among other problems.¹⁵ The WHO has established cut-off points for the level of each pollutant above which they pose a hazard to human health. The group Ecologistas en Acción¹⁶ has been producing an annual report since 2000 that includes data for the administrative subdivisions of the Community of Madrid established for the purpose of issuing NO₂ alerts. In a recent study, Ortiz et al.¹⁷ presented updated data from 52 provinces in Spain on the fraction of mortality attributable to air pollutants, more specifically to particulate matter. In our study, the NO₂ levels recorded in the air quality monitoring stations reached maximums of up to 66 µg/m³, which exceed the annual maximum of 40 µg/m³ considered acceptable by the WHO; we also found a strong correlation between NO₂ levels (Table 3) and the number of visits due to bronchiolitis and upper respiratory tract infections. In Spain, levels of air pollutants have been recorded for only a few years, and our study also found a positive correlation between the levels of SO₂, CO, NO_x and benzene and the incidence of respiratory disease.

In the reviewed literature on this subject, Karr et al.^{18–20} concluded that infants exposed to high levels of NO₂ in air are at higher risk of bronchiolitis; also, taking into account that vehicle emissions, especially from diesel vehicles, are the main source of NO₂ in cities, some studies have also demonstrated an association between asthma exacerbations and levels of ground traffic.^{21–23} Mohamed et al.²⁴ investigated the role of NO in the development of severe bronchiolitis requiring hospital admission. Our results were also statistically significant when it came to NO.

Overall, studies conducted in large cities such as Paris,²⁵ London,²⁶ Santiago de Chile^{27,28} and Ho Chi Minh (Vietnam)²⁹ have found an association between climate-related factors and environmental pollution (as well as the presence of

Table 1 Descriptive statistics.

	Minimum	Maximum	Mean	Standard deviation
Common cold	27	236	142.47	59.01
Bronchiolitis	0	93	22.98	21.22
Recurrent bronchospasm	0	67	14.33	14.15
Total respiratory problems	31	320	179.78	71.10
Total visits	1341	1609	1453.38	67.94
Particles	12	32	19.50	5.32
SO ₂	3	11	5.38	2.04
CO	0.20	0.60	0.35	0.11
O ₃	15	83	50.66	20.49
NO ₂	23	66	36.88	11.62
NO _x	33	180	70.94	42.10
Benzene	0.40	1.40	0.72	0.29
CH ₄	0.99	1.38	1.19	0.09
THC	1.27	1.73	1.44	0.10
NMHCs	0.14	0.49	0.23	0.076

Table 2 Spearman correlation coefficients for the comparison of the variables under study (showing only those for statistically significant correlations).

	Visits	Common cold	Bronchiolitis	Total respiratory complaints
Particles	NS	-0.479 <i>P</i> = .003	NS	-0.409 <i>P</i> = .13
SO ₂	NS		NS	0.372 <i>P</i> = .025
CO	NS	0.656*	0.571*	0.709*
O ₃	NS	-0.674*	-0.567*	-0.750*
NO ₂	NS	0.605*	0.464 <i>P</i> = .004	0.674*
NO _x	NS	0.649*	0.509 <i>P</i> = .002	0.722*
Benzene	NS	0.677*	0.568*	0.752*
Temperature	NS	-0.730*	-0.577*	-0.748*
CH ₄	0.645*	NS	NS	0.216 <i>P</i> = .206
NMHCs	-0.567*	NS	NS	0.176 <i>P</i> = .303

NS: not significant.

* *P* < .0001.**Table 3** Monthly number of visits due to respiratory complaints based on whether the mean NO₂ level of the month was less than or equal to or greater than 40 µg/m³.

	NO ₂ level	N	Mean	Standard deviation
Total respiratory complaints by µg/m ³	≥40	11	230.10	42.85
	<40	25	157.65	70.26

P = .007.**Table 4** Results of the multiple linear regression analysis of PC visits due to respiratory problems.

	Standardised beta coefficient	95% CI	<i>P</i>
NO ₂	3.630	0.691 to 6.570	.017
Temperature	-5.957	-8.665 to -3.248	<.0001

*R*²: 0.643.

specific pollutants) and an increased risk of severe bronchiolitis. We did not find a significant association between respiratory diseases and the levels of PM_{2.5} and PM₁₀. A study conducted in various cities in Brazil³⁰ found an

association between increasing levels of O₃ and the increase in the incidence of respiratory infections in the paediatric population. In our study, we did not find a correlation with O₃.

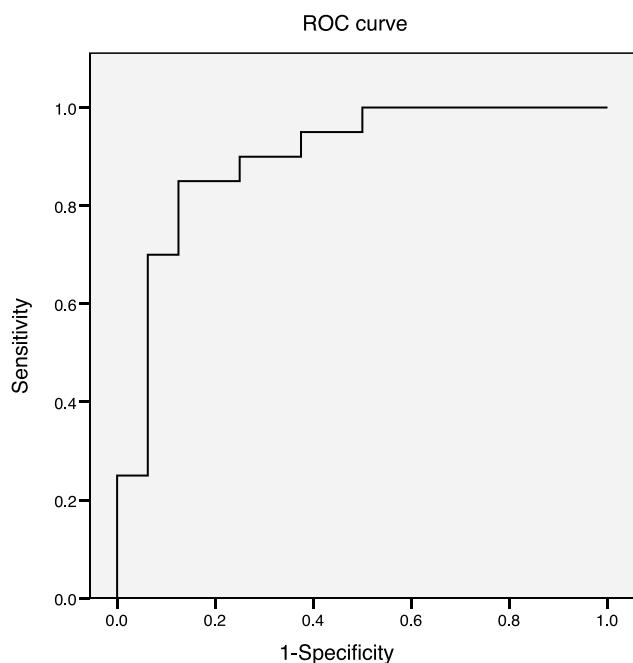


Figure 1 ROC curve of the values obtained by multiple logistic regression of the monthly visits due to respiratory complaints above the mean.

AUC = 0.897 (95% CI, 0.788–1.006; $P < .0001$).

A study by Martínez³¹ found an association between exposure to high levels of pollutants in the early years of life and the development of chronic obstructive pulmonary disease many years later.

The magnitude of these effects becomes significant when we take into account that they affect a large number of children, since these risks are omnipresent.

The negative correlation of temperature with respiratory diseases evinced by linear regression is probably due to the fact that low temperatures facilitate transmission of certain viruses, including those that cause bronchiolitis, whose outbreaks occur in wintertime. Environmental pollution, like respiratory disease, exhibits seasonal trends. Two main factors contribute to pollution in large cities. The first one is traffic, which is essential, and whose levels are higher during the school year and are influenced by the economy (for instance, in Madrid, where we conducted our study, traffic decreased by 3% in the worst years of the economic crisis).³² The second factor that contributes to pollution is heating, as many heating systems involve the use of gas oil, gas or coal, which are predictably used most frequently in the winter or cold seasons. In other words, there is a seasonal component in pollution, too, especially in association with the use of fossil fuels (which corresponds to the levels of NO₂ in our study).

Our study has the limitations intrinsic to ecological studies, in which the association between exposure and outcomes is observed in a specific group, which does not allow the identification of individual risk factors. Another limitation is the relatively high age range of the population under study.

Given the scarcity of the literature on the impact of exposure to environmental pollution in the early stages of life and

that all the studies we reviewed had been based on the rate of hospital admission due to bronchiolitis and the records of paediatric emergency departments, our study contributes a new perspective by reporting data from PC clinics, where the majority of cases of bronchiolitis and upper respiratory infections in children, which usually resolve with outpatient care, are diagnosed and managed.

In conclusion, our findings corroborate the association between environmental pollution and the demand for health care related to respiratory disease in the paediatric population.

We believe that it would be useful to conduct new studies on this subject, and that it is essential to promote measures to regulate ground traffic in large cities while encouraging the use of public transportation, bicycle riding and walking. We also feel compelled to emphasise the need to establish strict regulatory policies to guarantee the quality of the air that we breathe.

Conflicts of interest

The authors have no conflicts of interest to declare.

References

- Oyarzún GM. Contaminación aérea y sus efectos en la salud. *Rev Chil Enf Respir.* 2010;26:16–25.
- Ministerio de Agricultura y Pesca, Alimentación y Medio Ambiente. Estrategia española de cambio climático y energía limpia. Horizonte 2007-2012-2020. Available from: <http://www.mapama.gob.es/es/cambio-climatico/publicaciones/documentacion/estrategia-espanola-de-lucha-contra-el-cambio-climatico/> [accessed 08.06.17].
- European Environment Agency. Air quality in Europe: 2016 report. Luxembourg: European Environment Agency; 2016.
- Epstein PR. Climate change and emerging infectious diseases. *Microbes Infect.* 2001;3:747–54.
- McMichael AJ, Woodruff RE, Hales S. Climate change and human health: present and future risks. *Lancet.* 2006;367:859–69.
- Elminir HK. Dependence of urban air pollutants on meteorology. *Sci Total Environ.* 2005;350:225–37.
- Real decreto 102/2011, de 28 de enero, relativo a la mejora de la calidad del aire. Anexos I y II; 2011. Available from: <https://www.boe.es/boe/dias/2011/01/29/pdfs/BOE-A-2011-1645.pdf> [accessed 12.01.17].
- World Health Organization Air quality guidelines for particulate matter, ozone, nitrogen dioxide and sulfur dioxide. Global update 2005. Available from: <http://www.euro.who.int/Document/E> [accessed 06.06.17].
- Ballester F, Llop S, Querol X, Esplugades A. Evolución de los riesgos ambientales en el contexto de la crisis económica. *Informe SESPAS 2014.* *Gac Sanit.* 2014;28(S1):51–7.
- Linares C, Díaz J. Efecto de las partículas de diámetro inferior a 2,5 micras (PM_{2,5}) sobre los ingresos hospitalarios en niños menores de 10 años en Madrid. *Gac Sanit.* 2009;23:192–7.
- World Health Organization. Effects of air pollution on children's health and development. A review of the evidence. Copenhagen: WHO Regional Office for Europe; 2005.
- Royal College of Physicians. Every breath we take: the lifelong impact of air pollution. Report of a working party. London: RCP; 2016. p. 18.
- Ayuntamiento de Madrid. Sistema Integral de la Calidad del Aire; 2016. Available from: www.mambiente.munimadrid.es/sica/scripts/index.php [accessed 12.01.17].

14. Health Effects Institute. State of global air/2017. Special report. Boston, MA: Health Effects Institute; 2017.
15. Gascon M, Sunyer J. Contaminación del aire y salud respiratoria en niños. *Arch Bronconeumol*. 2015;51:371–2.
16. Ecologistas en Acción. Calidad del aire en la ciudad de Madrid, año 2015. Available from: http://www.ecologistasenaccion.es/IMG/pdf7info_calidad-aire-madrid-2015.pdf [accessed 12.01.17].
17. Ortiz C, Linares C, Carmona R, Díaz J. Evaluation of short-term mortality attributable to particulate matter pollution in Spain. *Environ Pollut*. 2017.
18. Karr CJ, Demers PA, Koehoorn MW, Lencar CC, Tamburic L, Brauer M. Influence of ambient air pollution sources on clinical encounters for infant bronchiolitis. *AJRCCM*. 2009;180:995–1001.
19. Karr CJ, Lumley T, Schreuder A, Davis R, Larson T, et al. Effects of subchronic and chronic exposure to ambient pollutants on infant bronchiolitis. *Am J Epidemiol*. 2007;165:553–60.
20. Koehoorn M, Karr CJ, Demers PA, Lencar C, Tamburic L, Brauer M. Descriptive epidemiological features of bronchiolitis in a population-based cohort. *Pediatrics*. 2008;122:1196–203.
21. Rice MB, Rifas-Shiman SL, Oken E, Gillman MW, Ljungman PL, Schwartz J. Exposure to traffic and early life respiratory infection: a cohort study. *Pediatr Pulmonol*. 2015;50:252–9.
22. Khreis H, Kelly Ch, Tate J, Parslow R, Lucas K, Nieuwenhuijzen M. Exposure to traffic-related air pollution and risk of development of childhood asthma: a systematic review and meta-analysis. *Environ Int*. 2016, <http://dx.doi.org/10.1016/j.envint.2016.11.012>.
23. Zheng X, Ding H, Jiang L, Chen S, Zheng J, Qiu M. Association between air pollutants and asthma emergency rooms visits and hospital admissions in time series studies: a systematic review and meta-analysis. *PLOS ONE*. 2015;10:e0138146.
24. Mohamed NI, Everard ML, Ayres JG, Barker NJ. A preliminary assessment of the role of ambient nitric oxide exposure in hospitalization with respiratory syncytial virus bronchiolitis. *Int J Environ Res Public Health*. 2016;13:578, <http://dx.doi.org/10.3390/ijerph13060578>.
25. Ségala C, Poizeau D, Mesbah M, Willems S, Madenberg M. Winter air pollution and infant bronchiolitis in Paris. *Environ Res*. 2008;106:96–100.
26. Hajat S, Haines A, Goubert SA, Atkinson RW, Anderson HR. Association of air pollution with daily GP consultations for asthma and other lower respiratory conditions in London. *Thorax*. 1999;54:597–605.
27. Avendaño LF, Céspedes A, Stecher X, Palomino MA. Influencia de virus respiratorios, frío y contaminación aérea en la infección respiratoria aguda baja del lactante. *Rev Med Chile*. 1999;127:1073–8.
28. Zamorano A, Marquez S, Aránguiz JL, Bedregal P, Sánchez I. Relación entre bronquiolitis aguda con factores climáticos y contaminación ambiental. *Rev Méd Chile*. 2003;131:1117–22.
29. Le TG, Ngo L, Mehta S, Do VD, Thach TQ, Vu XD. Effects of short-term exposure to air pollution on hospital admissions of young children for acute lower respiratory infections in Ho Chi Minh City Vietnam. *Res Rep Health Eff Inst*. 2012;169:5–72.
30. Moura M, Leite Junger W, Azevedo e Silva G, Ponce de León A. Air quality and acute respiratory disorders in children. *Rev Saúde Publ*. 2008;42:8–21.
31. Martinez FD. Early-life origins of chronic obstructive pulmonary disease. *N Engl J Med*. 2016;375:871–8.
32. Europa Press: La crisis económica ha ocasionado un descenso del número de desplazamientos motorizados en la ciudad. Available from: LaVanguardia.com.local [02.12.11; accessed 01.06.17].